

EFAPEL[®]

NEW



TRIPLE POWER



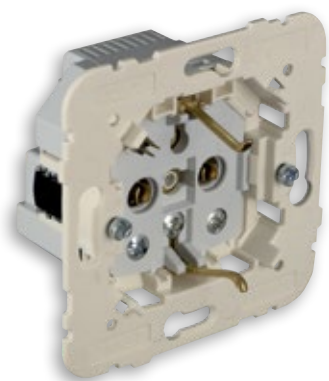
Schuko Earth Socket with USB A+C
for LOGUS90 Series



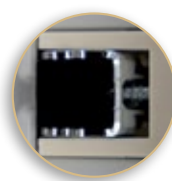
Schuko Earth Socket with USB A+C
for APOLO 5000 Series

The USB sockets, flexibly charge mobile devices without having to occupy the socket. Have two USB connections (type A and type C) and are the solution to **triple the power**.

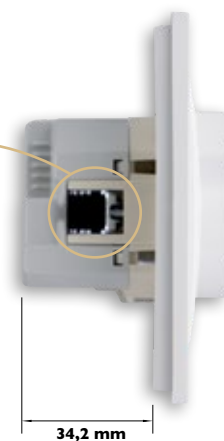
THE IDEAL UPDATE



Schuko Earth Socket with USB
Ref. 21137



Socket with **Claws**



34,2 mm

Easy to renew, simple to replace, whether renovating a space or replacing a socket.

LOGUS⁹⁰



Ref. **90630 T**



FINISHINGS
LOGUS90

COLOR

BR	●	White
MF	●	Ivory
GE	●	Ice
PE	●	Pearl
AL	●	Aluminium
IS	●	Grey
PM	●	Matte Black
DU	●	Golden

APOLO 5000



Ref. **50630 T**



FINISHINGS
APOLO5000

COLOR

BR	●	White
MF	●	Ivory
PT	●	Black
BM	●	Matte White
PM	●	Matte Black
PR	●	Silver
GR	●	Graphite
CH	●	Champagne
PL	●	Platinum

TECHNICAL CHARACTERISTICS

Input voltage	250 V 50/60 Hz
Input maximum current	300 mA
Maximum load	16 A
USB Output	5 V[⎓] 3000 mA 15 W
Consumption	< 50 mW
Operating temperature	-5 °C – +40 °C





The different connections can be used simultaneously, with the load current being distributed between them.



ISO 9001
ISO 14001
ISO 45001



RECOGNIZED
CERTIFICATION

efapel.com    

zastúpenie pre Slovenskú republiku:
EMAT elektro. s.r.o.
Pri Jelšine 3636/1
949 01 Nitra
mobil: +421 905 747 827
mail: efapel@emat.sk; eshop@emat.sk



P780202



Serpins,
3200-355 Serpins
PORTUGAL

EXP ORT
+351 239 970
135 expor
t@efapel.com

SAT - Technical Support Service
+351 239 970 132
sat@efapel.com